

PROVIDE INPUT AND STAY UPDATED

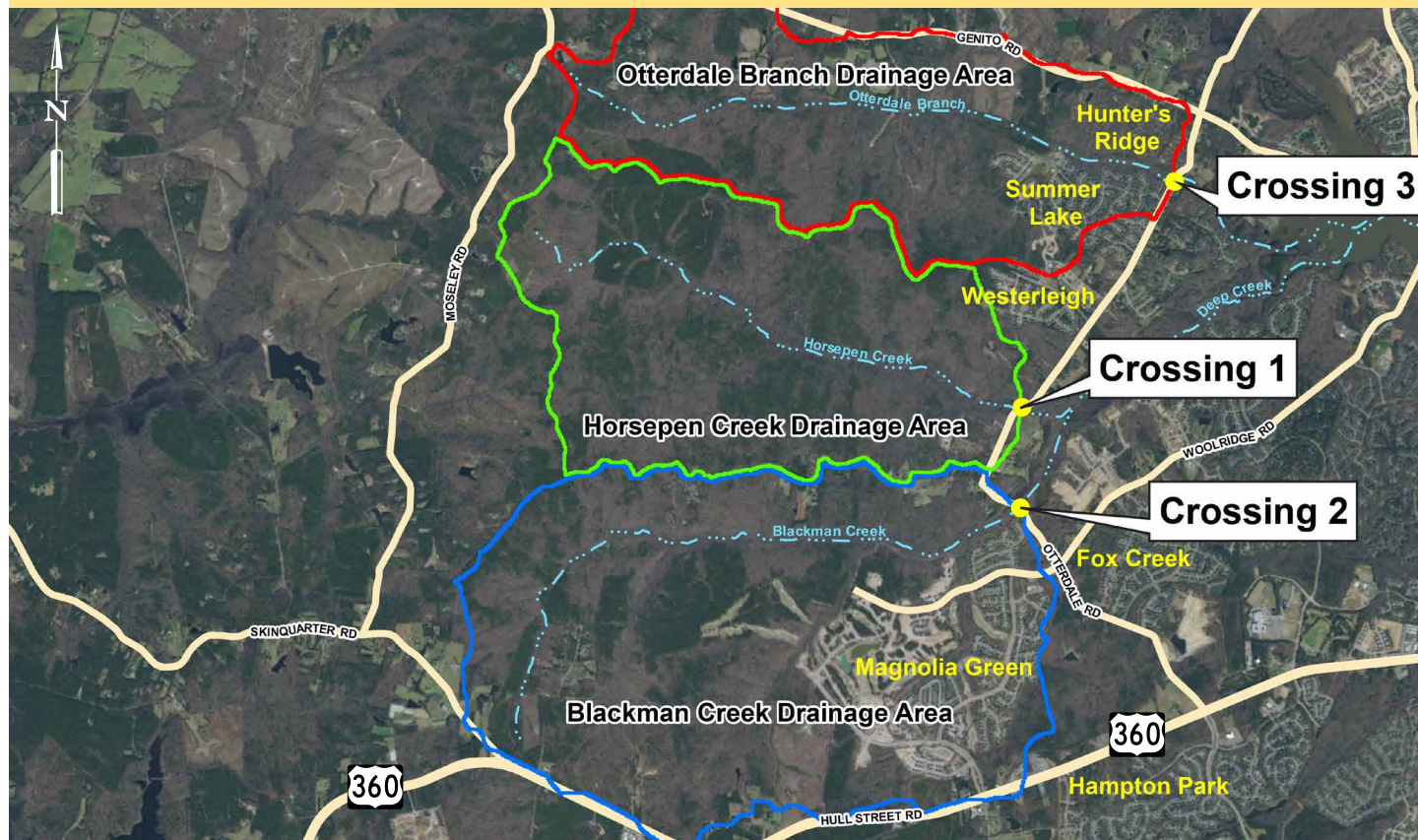
Written questions or comments may be submitted by visiting the project website at <https://www.chesterfield.gov/5106/Otterdale-Road-Drainage-Improvements> and clicking on the "Provide Input" tab. Written comments may also be submitted by email or by mail to the addresses provided on this sheet no later than June 25, 2021. Please reference "Otterdale Road Drainage Improvements" in the subject line.

Chesterfield County representatives will review and evaluate any information received as a result of the virtual design public meeting. A summary of comments and responses will be posted to the website below:

www.chesterfield.gov/roadprojects

Information about the project will be updated as the project progresses. Recordings of both meetings will be posted to the project website.

LOCATION MAP



CONTACT INFORMATION

Primary Contact: Nate Mathis, P.E. Senior Engineer	Chesterfield County Transportation Department	9800 Government Center Parkway P.O. Box 40 Chesterfield, VA 23832-0040	Transportation@chesterfield.gov 804-748-1037
---	---	--	---



© 2021 County of Chesterfield



Citizen Information Meeting

Otterdale Road Drainage Improvements Project
 Crossing 1 - Horsepen Creek
 Crossing 2 - Blackman Creek
 Crossing 3 - Otterdale Branch

Thursday, May 20, 2021 | Virtual Meeting
 Tuesday, May 25, 2021 | Live-streaming Meeting

County Project Number: JL11948C1

WELCOME

This meeting provides an opportunity to review and provide comments on the design plans for the Otterdale Road Drainage Improvements Project. The County is aggressively moving forward with improving several of the drainage crossings along Otterdale Road that routinely flood and overtop the existing roadway under severe rainfall events, closing the roadway and landlocking several communities preventing ingress and egress presenting an emergency access concern. The proposed improvements will incorporate bridge structure crossings needed to pass the 100-year storm event with no overtopping for the ultimate land use conditions. To achieve this, the proposed roadway profile grade will need to be raised approximately 6-8 feet at each location to prevent future road closures.

- Upgrade 3 existing crossings with either a single or multi-span bridge to reduce flooding frequency.
- Each crossing will be constructed under total road closure with an in-place detour route.
- The project is 100% county funded.

Your comments on the design are greatly encouraged. Chesterfield County and the project design team personnel will review comments received and consider these during the final design phase of the project. We appreciate your interest and involvement in the Otterdale Road Drainage Improvements project.

PROJECT OVERVIEW

Purpose

Provide flooding relief to three (3) stream crossing along Otterdale Road. Crossing 1 – Horsepen Creek, Crossing 2 – Blackman Creek, and Crossing 3 – Otterdale Branch.

Traffic Data - Otterdale Road

Woolridge Road to Duval Road – AADT (2020) 4,180	AADT (2025) 4,846
Duval Road to Genito Road – AADT(2020) 6,380	AADT(2025) 7,396

TENTATIVE SCHEDULE

Citizen Information Meetings	May 20 & 25th , 2021
RW & Easement Acquisition Phase	July – October, 2021
Utility Relocation Phase	October 2021 – May 2022
Construction Notice to Proceed	January 2022
Construction all 3 crossings complete	May 2024

(Tentative Schedule subject to change)

PROJECT DESCRIPTION

The Otterdale Road Drainage Improvements Project will provide the design of right of way and construction plans, at the Horsepen Creek, Blackman Creek, and Otterdale Branch crossings. The proposed improvements involve bridge construction with roadway grade and approach improvements at the three crossings. The project design includes widened shoulders (to accommodate bicyclists) and geometric curve improvements to improve safety along Otterdale Road. The project also includes the design of all major design elements, including utility relocations, hydraulics and hydrology, pavement markings, signs, and environmental permitting. One stormwater management bio-filter is proposed along the western side of Otterdale Road at the Horsepen Creek Crossing. The Otterdale Road Drainage Improvements project will be designed to capture and treat stormwater run-off from impervious areas as required by state law.

WHAT'S NEXT?

DESIGN – Detailed design is underway, and the final design phase will be complete this summer. The final design phase includes the completion of the roadway improvement plans, preparation of the right-of-way acquisition plans, continued coordination with the private utility companies, completion of all environmental studies and project clearances, and plan approval coordination with Chesterfield County and VDOT.

RIGHT-OF-WAY ACQUISITION & UTILITY COORDINATION – Acquisition of right-of-way and easements required to relocate utilities and construct the project is estimated to take approximately 4 months, after which private utilities, such as Dominion Energy, Verizon and Comcast, will relocate their facilities. Utility relocations for the project will be staged in sequence with the construction phasing of the project.

CONSTRUCTION – The project is tentatively scheduled to be under construction at the Horsepen Creek crossing in the spring of 2022 followed by the Blackman Creek crossing and last the Otterdale Branch crossing. The construction at each creek crossing will take approximately four (4) to six (6) months to complete while under a total road closure with an in-place detour route for each crossing. Access to residences and businesses will be maintained at all times during construction.

ENVIRONMENTAL REVIEW

Environmental reviews and coordination with the state agencies to obtain information about environmental resources in the project vicinity has been completed. Natural and historic resource agencies have had an opportunity to review and comment on the project during its development; and identify opportunities for avoidance, minimization, and mitigation of environmental impacts. All appropriate environmental permits have been prepared and will be reviewed/authorized by the regulatory agencies during the permitting process. Permitting is required for the anticipated temporary impacts to Swift Creek and for the permanent impacts to the jurisdictional streams in the project area. The project is being coordinated with the Virginia Department of Transportation (VDOT) as part of the Local Environmental Review Process (LERP). The LERP included a review of the potential impacts to endangered species within the vicinity of the project.

RIGHT-OF-WAY

The approach improvements at each of the three (3) creek crossing locations, will require the acquisition of variable amount of right-of-way and easement from approximately 26 parcels.

As the design of the project is finalized, additional easements for utility relocation may be required beyond the proposed right-of-way and easements shown on the design plans. Impacted property owners will be informed of the exact location of easements during the right-of-way acquisition process.

General information about the acquisition process can be found in VDOT's brochure entitled, Right-of-Way and Utilities: A Guide for Property Owners and Tenants, which is available on VDOT's website:

http://virginiadot.org/business/resources/Right_of_way/A_Guide_for_Property_Owners_and_Tenants.pdf

Information regarding right-of-way acquisition for the project may be obtained from the contact listed on the back of this brochure.

HORSEPEN CREEK CROSSING

